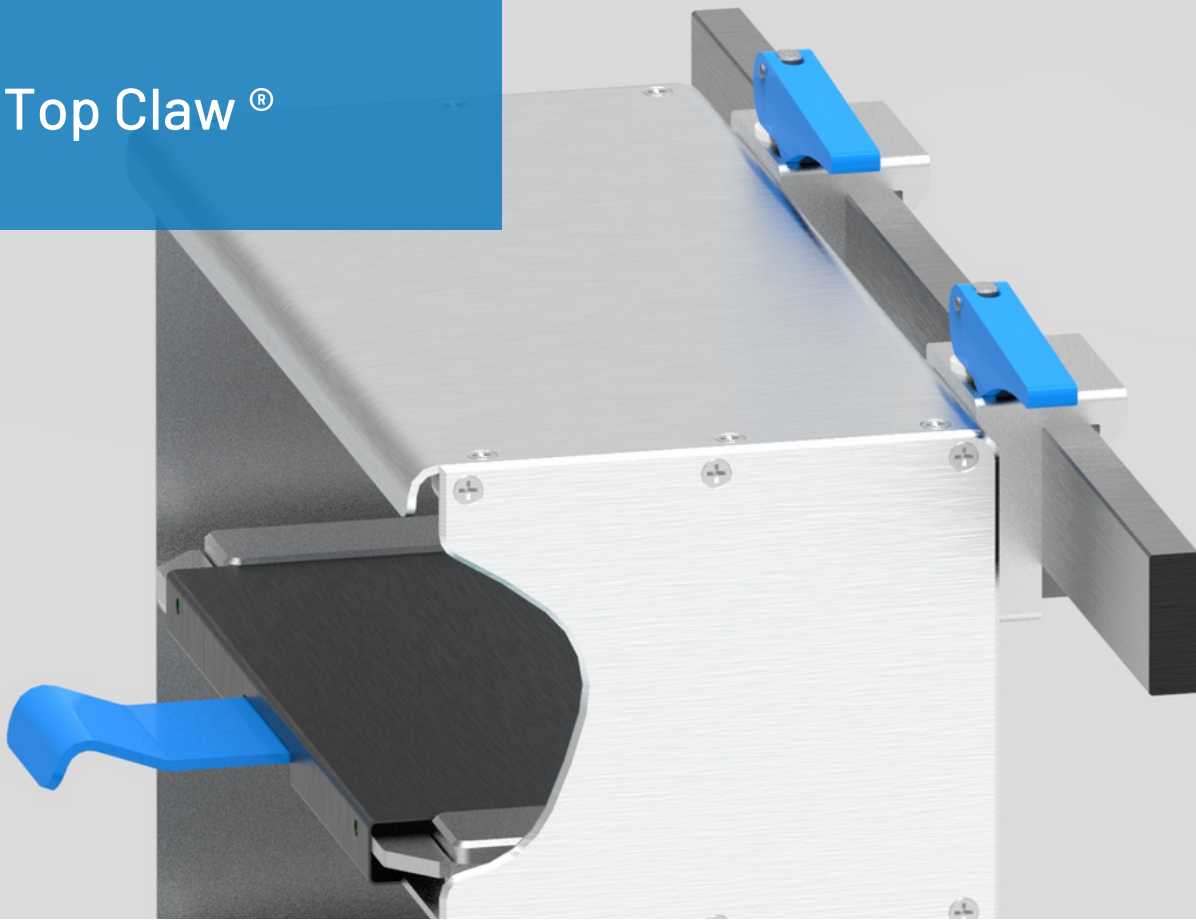


Top Claw®



Description

The Top Claw® facilitates the mounting of various medical equipment. Its design allows for the convenient and efficient attachment of devices by enabling a pushing action from above. The Top Claw® comes in left and right versions. This allows for greater flexibility in mounting various devices and accommodating different orientations. The 22mm mounting hole distance allows for interchangeability between different devices and mounting brackets that adhere to this standard.

With its reliable construction, the top claw provides a secure and stable hold for the mounted devices. This is crucial for maintaining the stability and safety of the medical equipment, minimizing the risk of accidental dislodgment or falls.





Technical Details

Mass

- 100g

Mounting Hole Distance

- 22mm

Dimensions

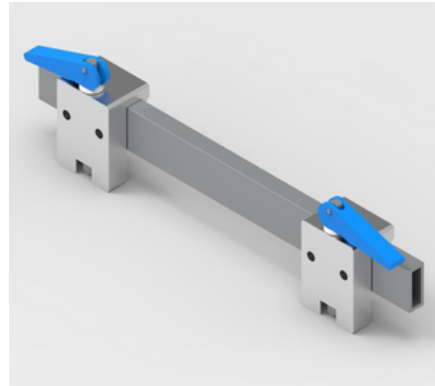
- 67,5 x 35 x 27,5 [mm]
- 2,65 x 1,38 x 1,08 [inch]

Materials

- Aluminium
- Stainless Steel
- PTFE / PU

Compliance

- Part21(EU 748/2012)
- EASA FAR-/CS 29
- MDR(EU 745/2017)
- EN 1789
- EN 19054
- RoHS/REACH



Payload:

25kg

Load factor n:

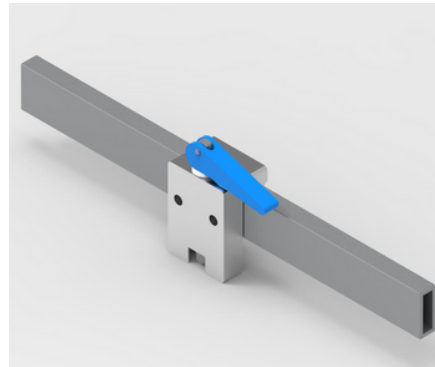
Horizontal: 16

Down: 20

Up: 10

Lever arm:

100mm



Payload:

12,5kg

Load factor n:

Horizontal: 16

Down: 20

Up: 10

Lever arm:

100mm

Our products - your benefit

You require the installation of new mission equipment or need medical systems for your new mission profile - we have the right solution for your demands.

By cooperating with renowned partners from the aviation industry and companies in air rescue, we design and manufacture tailor-made products for your applications. Whether fiber composite, metal or avionics, we implement your requirements from the idea to the finished product for you in our EASA Part 21J Design Organization and Part 21G Production Organization.

We are specialized in the following areas:

- Mission Equipment
- Medical Systems
- Engineering
- Manufacturing



SPAES GmbH & Co. KG

Greschbachstraße 29, 76229 Karlsruhe, Germany

Tel.: +49 (0) 721 96317750 | Fax: +49 (0) 721 96318273

info@spaes.de | www.spaes.de